

Dental fracture stabilization for insertion of fiber-reinforced post and tooth-fragment reattachment: 6-month follow-up

Rodrigo Borges **FONSECA**¹

Marcelo Costa **DALTRO**²

Amanda Vessoni Barbosa **KASUYA**³

Isabella Negro **FAVARÃO**³

Carolina Assaf **BRANCO**⁴

ABSTRACT

Dental fractures in endodontically treated teeth with a great loss of dental structure may be restored using bonding techniques associated with glass fiber post retention of the fragment. The present study reports a weakened and fractured crown restored by dental reattachment after crown stabilization with polyvinylsiloxane matrix, and a glass fiber post cementation for

dental fragment retention. The employed techniques enabled the correct dental positioning during reattachment, with a possible increase of resistance. After 6 months follow-up the periodontal tissues showed itself in health condition and functional evaluations maintained the success of the proposed treatment.

Keywords Fracture. Reattachment. Adhesion. Glass fiber post.

How to cite this article: Fonseca RB, Daltro MC, Kasuya AVB, Favarão IN, Branco CA. Dental fracture stabilization for insertion of fiber-reinforced post and tooth-fragment reattachment: 6-month follow-up. *Dental Press Endod.* 2012 Oct-Dec;2(4):38-45.

» The authors report no commercial, proprietary, or financial interest in the products or companies described in this article.

Received: September 20, 2012. Accepted: November 5, 2012.

¹Adjunct Professor of the Department of Restorative Dentistry and Dental Materials, School of Dentistry, Federal University of Goiás.

²Specialist in Implantology, Goiânia-GO.

³MSc students in Dental Clinic, School of Dentistry, Federal University of Goiás.

⁴MSc in Oral Rehabilitation. PhD in Restorative Dentistry, School of Dentistry of Ribeirão Preto, São Paulo University.

Contact address: Rodrigo Borges Fonseca
Faculdade de Odontologia – Universidade Federal de Goiás
Praça Universitária esquina com 1ª Avenida, s/n, Setor Universitário
Goiânia / GO – Brazil – CEP: 74.605-220 - E-mail: rbfonseca.ufg@gmail.com

Introduction

Endodontically treated teeth are more susceptible to fracture than vital teeth,¹ becoming a challenge for Restorative Dentistry.² This susceptibility has been attributed to substantial structure loss and changes in the architecture of the crown-root complex,^{3,4,5} due to caries, fracture, preparation and instrumentation during endodontic treatment,^{2,6,7} with loss of reinforcing structures as marginal ridges, enamel bridges, pulp chamber roof and all structure above it.^{8,9}

Restoring endodontically treated teeth with complicated crown or crown root fractures requires profound knowledge in endodontics, periodontics and operative dentistry.¹⁰ If the fracture extends further subgingivally, it might be necessary to expose the fracture line⁵ per gingivoplasty and osteotomy procedures, or per orthodontic extrusion of the apical fragment, converting the subgingival fracture to a supra-gingival one and enabling restoration.^{11,12}

There are many alternatives to restore fractured crowns, being the original fragment reattachment the most indicated because cavity preparation is not required and also esthetic and functional outcomes are facilitated.^{13,14} The esthetic is obtained once the anatomic form, color, bright, and original surface texture are maintained. Furthermore, incisal edge of the dental fractured will suffer similar wear to adjacent teeth over time;¹⁵ this technique is faster than direct or indirect restoration techniques and provides results quite predictable in the long term.¹⁴

In endodontically treated teeth with great structure loss, the pulp chamber space might be used as an internal reinforcement with adhesive materials¹⁶, avoiding any other wear in order to achieve greater resistance to fracture. The use of a glass fiber post promotes the fragment retention^{10,17,18,19} and might enable tooth reinforcement.^{9,20}

The objective of this study is to present a case report of restoration of an weak endodontic treated tooth fractured due to occlusal overload. The clinical sequence includes tooth fragment stabilization and reattachment and insertion of glass fiber post, periodontal assessment and occlusal adjustment with 6 months follow up.

Case report

The patient, 21 years old, search dental care after right lateral incisor fracture during normal masticatory function. The patient reported that the tooth had

been submitted to endodontic treatment for more than 5 years ago, before orthodontic treatment. Clinically, it was observed that the fragment was represented by entire dental crown, which remained in place because of subgingival periodontal ligament attachment. Figure 1 shows the purplish appearance of supporting periodontal tissues as a result of an inflammatory episode after fracture; however, the fragment was intact and looking good at vestibular side. Patient teeth showed demineralized white spots from remineralized enamel caries after orthodontic treatment. Radiographic analysis (Fig 2) revealed fracture near the bone, requiring correction of biological distances.

In order to allow periodontal surgery procedures to expose the fracture line, tooth #12 should be fixed at its original position, adopting the following technique. After perfect adaptation of the fragment, a polyvinylsiloxane matrix (Futura AD, Nova DFL, RJ, Brazil) was manufactured (Fig 3) to hold the tooth in position during procedures for adhesive anchorage.

Teeth #11, #12 and #13 were etched with 37% phosphoric acid (Alpha Etch, Nova DFL) for 15s and a dentine bonding agent (Adper Single Bond 2, 3M-ESPE, USA) was applied in two layers with gentle air in their palatal surfaces. Before photopolymerization, the matrix was positioned and then light exposition performed for 20s in each tooth. A composite resin layer (Natural Look, color A1E, Nova DFL) with an average thickness of 2 mm was used and light cured for 40 seconds per tooth (Fig 4).

Figure 5 shows the tooth #12 fixed to #11 and #13, and removal of the composite resin from pulp chamber. It is possible to verify the fracture line with perfect adaptation to the remaining root after the fixation procedures, and also the reduced presence of dentine inside the fragment, characterizing its increased friability. The root canal was prepared leaving 5 mm in length of root filling at apical region, and prepared with drill #3 of Exact Translucent fiberglass post system (Angelus, Londrina, PR, Brazil) in order to have a close fit between the walls of the root canal and the fiber post.

After preparation, the post was cleaned with alcohol and etched with 37% phosphoric acid for 1 minute, then silanized in hot air for 2 minutes and received a thin adhesive layer (Adhesive, Fusion Duralink, Angelus). The inner of the root canal was protected with a cotton ball and the coronal cavity



Figure 1. Initial image of darkened tooth #12 and inflammation of supporting tissues due to subgingival fracture.

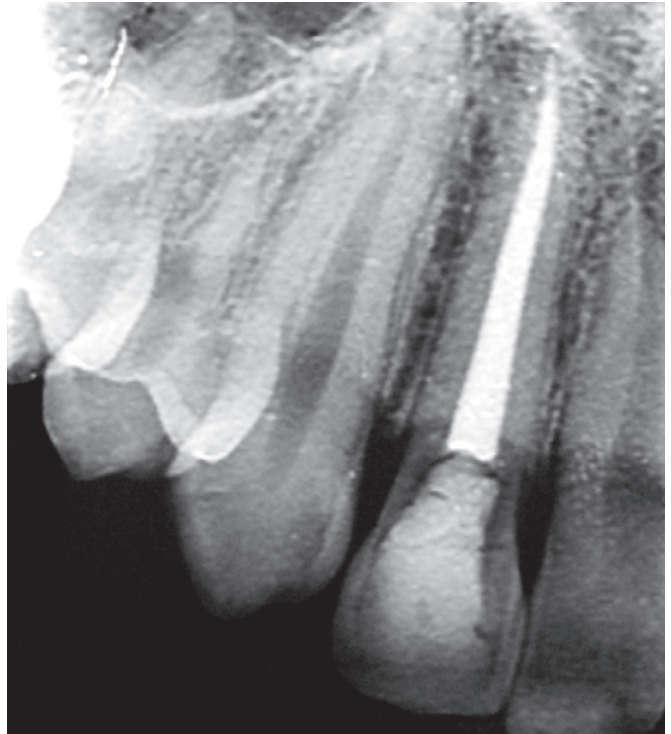


Figure 2. Periapical radiograph showing fracture line and endodontic treatment well executed.

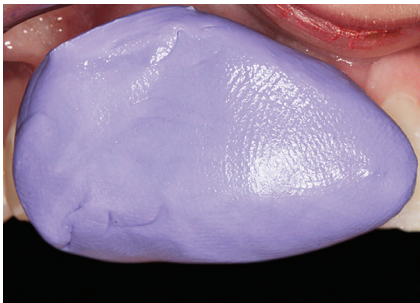


Figure 3. Direct impression of properly re-positioned teeth for producing the polyvinylsiloxane matrix. The matrix was cut with a scalpel blade maintaining the incisal portion to be used for fragment fixation.

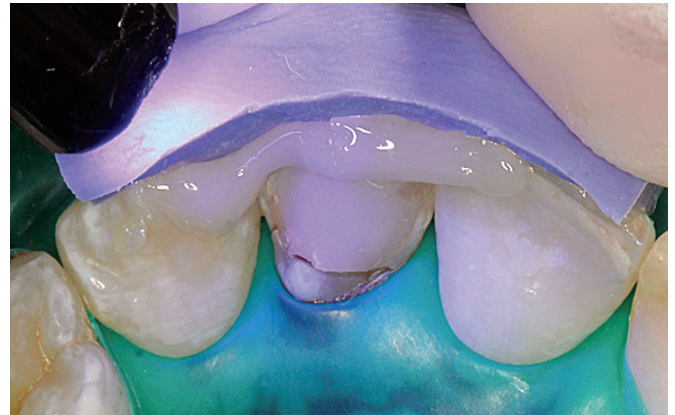
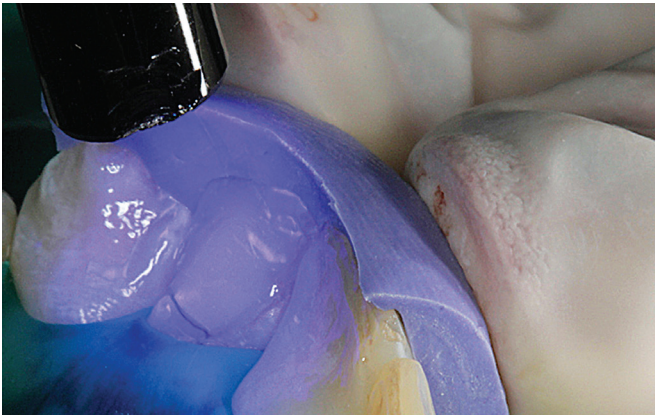
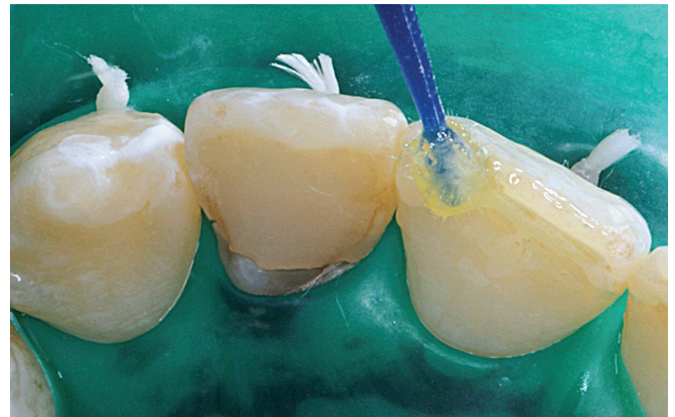
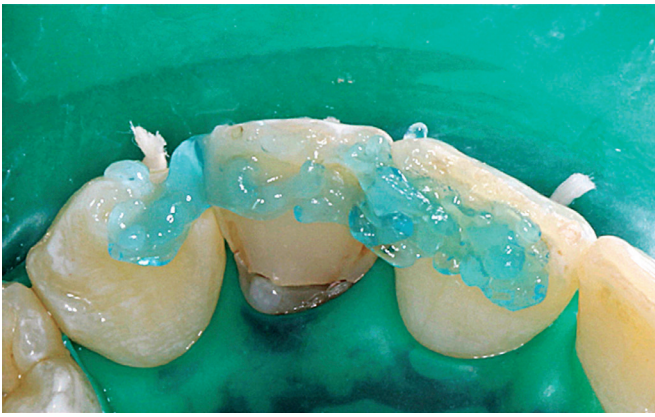


Figure 4. Adhesive technique for fixation of the fragment on adjacent teeth. For the fixation, the silicon matrix must be kept in place during the photopolymerization of the bonding agent and composite resin.

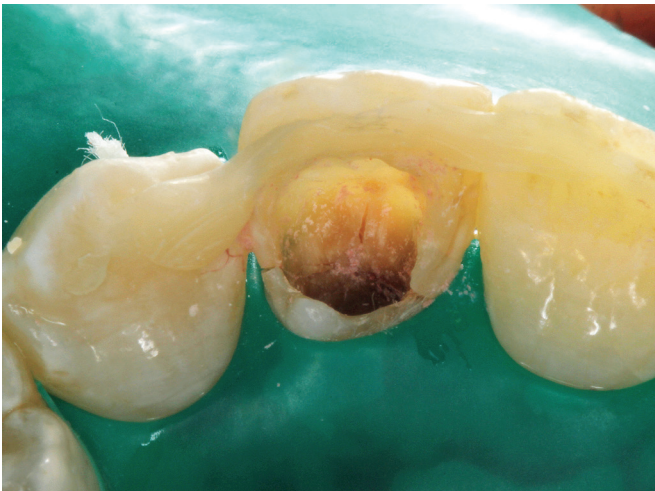


Figure 5. Tooth #12 fractured. Note the fracture line traversing the entire crown and the tooth fixed to the adjacent teeth allowing the restorative procedure.

etched for 15s with 37% phosphoric acid, application of two layers of primer and one layer of adhesive (Fusion Duralink, Angelus). The cotton ball was removed and the interior of the root canal filled with a self-etch adhesive resin cement (U-100, 3M-ESPE, USA); then, the fiber post was inserted. After 5 minutes, the cement was photopolymerized for 40 seconds on each side, and the pulp chamber incrementally restored with a nanoparticulate composite resin Z350XT (3M-ESPE), color A2B (Fig 6).

In Figure 6 it is possible to see the immediate restoration with a lighter appearance of gingival tissue and restored tooth. The patient was referred for periodontal evaluation, and during surgery it was noticed the perfect adaptation of the reattached fragment. Figure 7 shows excursive mandibular movements of protrusion (upper images) and right laterality (lower images), showing the correct occlusal adjustment, relieving any contact on the restored tooth and maintaining balanced contacts. Figure 8 shows 6 months follow-up, with gingival health and maintenance of the initial result.

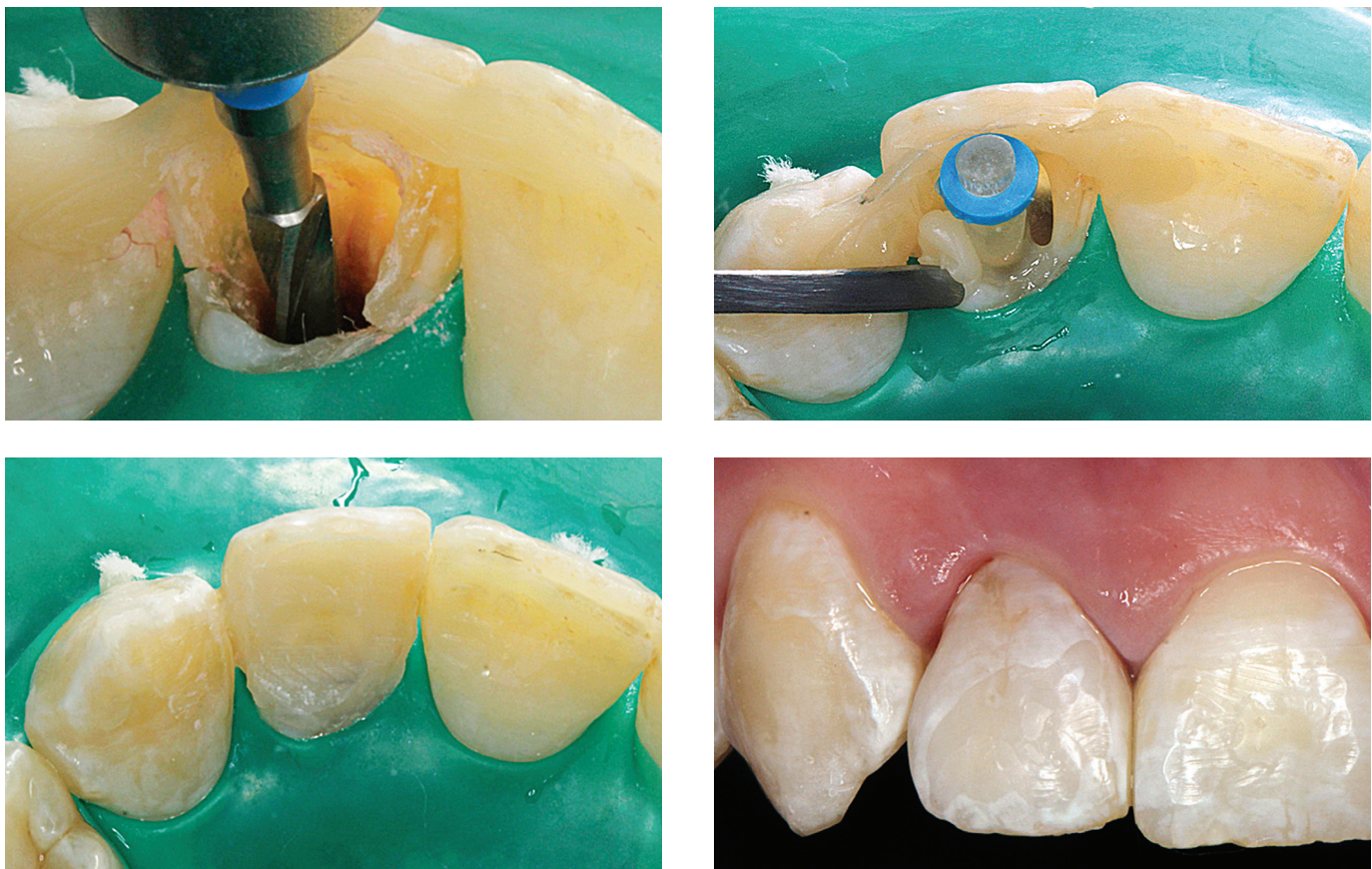


Figure 6. Root canal preparation and luting of fiberglass post with subsequent composite resin restoration. It can be verified the immediate result of fragment reattachment and fiber post insertion.

Discussion

The employed technique promotes immediate resolution for cases in which fragments possess optimal adaptation to the remaining tooth structure. However, it is difficult to determine its survival rate, even though the scientific literature reports many cases of successful reattachments^{10,19,21} and restorations with glass fiber posts.^{20,22} The survival rate of reattachments depends on fragment's fractured size,²³ and some studies report up to six years of successful follow-up.^{10,19} Fokkinga et al²² reported in a clinical trial, after 17-years follow up, that the survival rate of endodontically treated teeth with glass fiber posts ranged from 71% to 80% when the remaining tooth presents residual coronary walls.

Loguercio et al²⁴ investigated, in a *in vitro* laboratory study, the performance of some techniques for tooth fragment reattachments in endodontically treated teeth and reported that the placement of a post prior to reattachments of the fragment does not promote tooth re-

inforcement. However, in this laboratory study the fragment had a small size and the endodontic treatment did not produced a great loss of sound structure.

In the present case an extensive fracture occurred during normal masticatory function as a result of the fragility of the tooth structure. Therefore, in these situations, the association of a glass fiber post and composite resin in endodontically treated teeth promotes greater fragment retention,^{25,26} and may produce greater reinforcement^{9,20} since the entire fragment was composed of enamel, which is a friable tissue and more prone to fractures than dentin.²⁷

Previous studies have shown that endodontically treated teeth can have the pulp chamber filled with composite resin in order to be reinforced.^{14,28} Composite resins show elastic modulus similar to dentin; when properly bonded to the tooth structure there is the creation of a single unit (tooth plus restoration),²⁹ minimizing stress concentration at the interfaces between



Figure 7. Excursive mandibular movements with anterior guides protecting tooth #12. Upper pictures shows protrusion with absence of contacts in #12, which is also observed in the lower pictures with right laterality.



Figure 8. Image of 6 months follow-up showing the quality of supporting tissues and tooth color.

tooth/resin or resin/post.²⁹ In the study by Loguercio et al,²⁴ the fracture resistance of endodontically treated teeth with a bonded fragment was similar to intact teeth filled with composite resin and fiber glass post.

When prefabricated fiberglass post is to be used, the space between the post and root canal walls results in a very thick cement luting line,³⁰ generating a weak area that can potentially compromise the long-term prognosis.³⁰ Thus, the use of fitted fiberposts, juxtaposed to the root canal, has been considered important to increase the resistance of restored set,³⁵ as done in this case.

The present report showed that a crown fragment could be restored with a fiberglass post in order to increase retention and possibly resistance to fracture, considering fragment margins were perfectly adapted and could be accessed. The technique of positioning the fragment with polyvinilsiloxane matrix enabled a greater precision to bonding procedures and resulted in functional and esthetic quality, besides the advantage of ease implementation and low cost.

Conclusion

Extensive crown fractures can occur in endodontically treated teeth with great loss of sound structure. The fragment reattachment requires maintenance of structural integrity of the tooth, in addition to a secure retention. In the present case, the stabilization of the fragment with a polyvinylsiloxane matrix and use of a fiberglass post showed to be a simple and effective procedure.

References

1. Goodacre CJ, Spolnik KJ. The prosthodontic management of endodontically treated teeth: a literature review. Part I. Success and failure data, treatment concepts. *J Prosthodont.* 1994;3(4):243-50.
2. Strub JR, Pontius O, Koutayas S. Survival rate and fracture strength of incisors restored with different post and core systems after exposure in the artificial mouth. *J Oral Rehabil.* 2001;28(2):120-4.
3. Jotkowitz A, Samet N. Rethinking ferrule: a new approach to an old dilemma. *Br Dent J.* 2010;209(1):25-33.
4. Stankiewicz NR, Wilson PR. The ferrule effect: a literature review. *Int Endod J.* 2002;35(7):575-81.
5. Caliskan MK, Ceyhanli KT. Reattachment of endodontically treated lateral incisor with supragingivally complicated crown fracture using fiber-reinforced post. *Dent Traumatol.* 2011;27(4):305-8.
6. Butz F, Lennon AM, Heydecke G, Strub JR. Survival rate and fracture strength of endodontically treated maxillary incisors with moderate defects restored with different post-and-core systems: an in vitro study. *Int J Prosthodont.* 2001;14(1):58-64.
7. Heydecke G, Butz F, Strub JR. Fracture strength and survival rate of endodontically treated maxillary incisors with approximal cavities after restoration with different post and core systems: an in-vitro study. *J Dent.* 2001;29(6):427-33.
8. Reeh ES, Douglas WH, Messer HH. Stiffness of endodontically-treated teeth related to restoration technique. *J Dent Res.* 1989;68(11):1540-4.
9. Mangold JT, Kern M. Influence of glass-fiber posts on the fracture resistance and failure pattern of endodontically treated premolars with varying substance loss: an in vitro study. *J Prosthet Dent.* 2011;105(6):387-93.
10. Cengiz SB, Kocadereli I, Gungor HC, Altay N. Adhesive fragment reattachment after orthodontic extrusion: a case report. *Dent Traumatol.* 2005;21(1):60-4.
11. Caliskan MK. Surgical extrusion of a cervically root-fractured tooth after apexification treatment. *J Endod.* 1999;25(7):509-13.
12. Caliskan MK, Turkun M, Gomel M. Surgical extrusion of crown-root-fractured teeth: a clinical review. *Int Endod J.* 1999;32(2):146-51.
13. Maia EA, Baratieri LN, de Andrada MA, Monteiro S, Jr., de Araujo EM Jr. Tooth fragment reattachment: fundamentals of the technique and two case reports. *Quintessence Int.* 2003;34(2):99-107.
14. Reis A, Francci C, Loguercio AD, Carrilho MR, Rodrigues Filho LE. Re-attachment of anterior fractured teeth: fracture strength using different techniques. *Oper Dent.* 2001;26(3):287-94.
15. Bruschi-Alonso RC, Alonso RC, Correr GM, Alves MC, Lewgoy HR, Sinhoreti MA, et al. Reattachment of anterior fractured teeth: effect of materials and techniques on impact strength. *Dent Traumatol.* 2010;26(4):315-22.
16. Stojanac I, Ramic B, Premovic M, Drobac M, Petrovic L. Crown reattachment with complicated chisel-type fracture using fiber-reinforced post. *Dent Traumatol.* 2012 Jun 8.
17. Durkan RK, Ozel MB, Celik D, Bagis B. The restoration of a maxillary central incisor fracture with the original crown fragment using a glass fiber-reinforced post: a clinical report. *Dent Traumatol.* 2008;24(6):e71-5.
18. Turgut MD, Gonul N, Altay N. Multiple complicated crown-root fracture of a permanent incisor. *Dent Traumatol.* 2004;20(5):288-92.
19. Eden E, Yanar SC, Sonmez S. Reattachment of subgingivally fractured central incisor with an open apex. *Dent Traumatol.* 2007;23(3):184-9.

20. Ferrari M, Cagidiaco MC, Grandini S, De Sanctis M, Goracci C. Post placement affects survival of endodontically treated premolars. *J Dent Res*. 2007;86(8):729-34.
21. Ertugrul F, Eden E, Ilgenli T. Multidisciplinary treatment of complicated subgingivally fractured permanent central incisors: two case reports. *Dent Traumatol*. 2008;24(6):e61-6.
22. Fokkinga WA, Kreulen CM, Bronkhorst EM, Creugers NH. Up to 17-year controlled clinical study on post-and-cores and covering crowns. *J Dent*. 2007;35(10):778-86.
23. Bitter K, Noetzel J, Stamm O, Vaudt J, Meyer-Lueckel H, Neumann K, et al. Randomized clinical trial comparing the effects of post placement on failure rate of postendodontic restorations: preliminary results of a mean period of 32 months. *J Endod*. 2009;35(11):1477-82.
24. Loguercio AD, Leski G, Sossmeier D, Kraul A, Oda M, Patzlaff RT, et al. Performance of techniques used for re-attachment of endodontically treated crown fractured teeth. *J Dent*. 2008;36(4):249-55.
25. Cheung W. A review of the management of endodontically treated teeth. Post, core and the final restoration. *J Am Dent Assoc*. 2005;136(5):611-9.
26. Kono T, Yoshinari M, Takemoto S, Hattori M, Kawada E, Oda Y. Mechanical properties of roots combined with prefabricated fiber post. *Dent Mater J*. 2009;28(5):537-43.
27. Giannini M, Soares CJ, de Carvalho RM. Ultimate tensile strength of tooth structures. *Dent Mater*. 2004;20(4):322-9.
28. Reis A, Loguercio AD, Kraul A, Matson E. Reattachment of fractured teeth: a review of literature regarding techniques and materials. *Oper Dent*. 2004;29(2):226-33.
29. Craig R. *Restorative dental materials*. 11th ed. St. Louis: Elsevier; 2001.
30. Silva GR, Santos-Filho PC, Simamoto-Junior PC, Martins LR, Mota AS, Soares CJ. Effect of post type and restorative techniques on the strain and fracture resistance of flared incisor roots. *Braz Dent J*. 2011;22(3):230-7.